

Project Name

Fixture Type



## Description

- **Patented T-Bar Replacement** – The only patented linear lighting solution designed to directly replace a T-Bar, GRIDBar 15/16" Square Drop Lens 1/2" is approved by Armstrong® Ceiling Systems and seismic tested to ensure reliable integration within suspended grid ceilings.
- **TrueGrid™ Alignment** – Precision 15/16" width matches standard T-Bar profiles for a seamless design integration.
- **Easy Installation** – GRIDBar 15/16" can be positioned anywhere in the ceiling grid by mounting directly to a T-bar – in-line or cross-tile.
- **SmartBeam® Optical Control** – Advanced optics deliver high-performance beam distributions tailored to the space.
- **BABAA Compliant** – BABAA & TAA compliant in-house manufacturing in Woburn, MA with North American supply chain.

## Key Facts



|                            |                                 |
|----------------------------|---------------------------------|
| <b>Dimensions</b>          | 15/16" (W) X 15/16" (H)         |
| <b>Mounting Style</b>      | T-Bar / T-Bar Replacement       |
| <b>Standard Lengths</b>    | 2FT, 4FT, 6FT, 8FT              |
| <b>Finishes</b>            | Powder Coated & Anodized        |
| <b>Housing Material</b>    | Extruded, Recycled Aluminum     |
| <b>Warranty</b>            | 5-Year Warranty, 50,000 Hours   |
| <b>Sustainability</b>      | Declare Listed & Red List Free  |
| <b>LED Performance</b>     | 1,000 Lm/Ft, 135 Lm/W efficacy  |
| <b>LED Choices</b>         | Static White                    |
| <b>Optics Choices</b>      | Square Drop Lens 1/2"           |
| <b>CRI / CCT</b>           | 80/90/95+, 2700K to 6500K       |
| <b>Driver Options</b>      | Factory, Lutron, & eldoLED      |
| <b>Emergency Backup</b>    | Emergency Circuit & Battery     |
| <b>Compatible Controls</b> | Lutron, Casambi, Cooper, nLight |
| <b>Power Cord</b>          | 48"                             |



Project Name

Fixture Type

## Fixture Ordering

| PRODUCT       | FIXTURE LENGTH | FINISH | END CAP STYLE |
|---------------|----------------|--------|---------------|
| GBA1516-DL-SW |                |        |               |

### GBA1516-DL-SW

1" Compact Linear LED T-Bar Replacement

**Standard Lengths**

- L2 - 2 ft
- L4 - 4 ft
- L6 - 6 ft
- L8 - 8 ft

**Custom Lengths**

L\_X\_N\_X

L=Feet, N=Inches.

Example: Specifying a 10'3" fixture should be specified as L10N3.

Custom fixtures are only available in 3" increments.

**Powder Coated**

- PMW - Matte White
- PMB - Matte Black
- PMG - Matte Gray
- PRAL\_ - Specify RAL #

**Anodized**

- ACL - Clear Anodized
- ACU\_ - Custom Anodized #

E1 - Flat End Cap

| CRI | CCT | OPTIC (DIRECT ONLY) | DIRECT BEAM PATTERN | DIRECT OUTPUT |
|-----|-----|---------------------|---------------------|---------------|
|     |     |                     |                     |               |

- 80 - Std. 80 CRI
- 90 - Std. 90 CRI
- 95 - High-Def. 95 CRI

- 27 - 2700K
- 30 - 3000K
- 35 - 3500K
- 40 - 4000K
- X\_ - Specify CCT

OSDL05 - Square Drop Lens 1/2" DLAM - Lambertian

- 35 - 350 lm/ft
- 50 - 500 lm/ft
- 75 - 750 lm/ft
- 100 - 1,000 lm/ft
- X\_ - Specify lm/ft

| LINE VOLTAGE (DC) | REMOTE DRIVER (POWER) | MOUNTING TYPE |
|-------------------|-----------------------|---------------|
|                   |                       |               |

- UNV - 120/277V
- 347 - 347V

- FDND - Factory Non-Dimming
- FD00 - Factory 0-10V 0.1% Dim
- FD01 - Factory 0-10V 1% Dim
- FD10 - Factory 0-10V 10% Dim
- FDDA - Factory DALI 0.1% Dim
- FDDX - Factory DMX Dim
- FDTR - Factory TRIAC Dim
- LD01 - Lutron Hi-Lume 1% Dim
- X\_ - Specify Driver

- Lay-In (Drop-In) Ceiling Tile
- TC1 - 9/16" Flat T-Bar + Lay-In Tile Mount
- TC2 - 9/16" Bolt Slot T-Bar + Lay-In Tile Mount
- TC3 - 15/16" Flat T-Bar + Lay-In Tile Mount
- Tegular Ceiling Tile
- TC4 - 9/16" Flat T-Bar + Tegular Tile Mount
- TC5 - 9/16" Bolt Slot T-Bar + Tegular Tile Mount
- TC6 - 15/16" Flat T-Bar + Tegular Tile Mount

## Optional

| EMERGENCY BACKUP | WIRELESS MODULE & SENSOR |
|------------------|--------------------------|
|                  |                          |

- EMC - Emergency Circuit
- EMB - Emergency Battery (10 W — Remote)
- X\_ - Specify Backup

- WCN - Wireless Communication Node (Connected to LED Driver In-Fixture or In-Driver Box)
- PIR - Wireless Communication Node + PIR Sensor (Standard Lens for Low Bay < 10')
- MW - Wireless Communication Node + MW Sensor (Standard for Low Bay < 10')
- X\_ - Other - Specify Embedded Component or Specific Non-Standard Sensor Detection Range

## SmartBeam® Technology

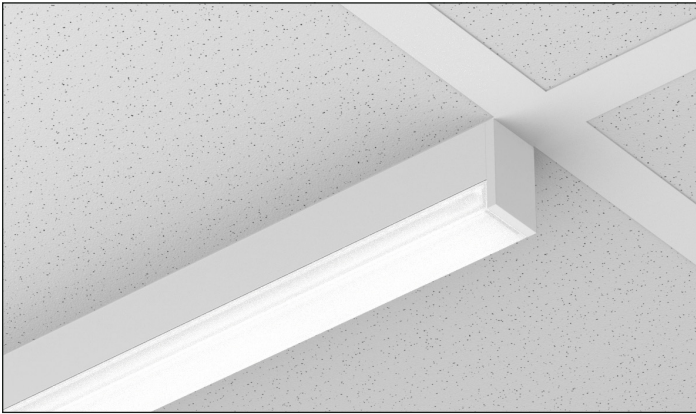
### The Ultimate Control of Lighting Distributions

SmartBeam makes it easy to specify the exact light required for any architectural space. Available in every FlexGrid product; it is now possible to create truly tailored and engaging lighting that transform spaces, improves visual comfort, and saves energy.

To learn more about our SmartBeam Technology, please click or scan the QR Code.

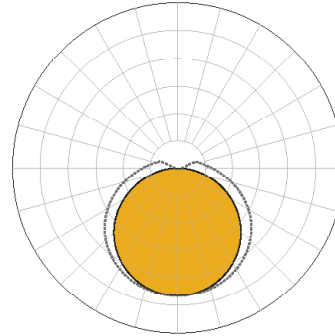


### Direct Optics Choices



OSDL05 - Square Drop Lens 1/2"

DLAM: Lambertian w/ 1/2" Drop Lens



### LPW Efficacy Conversion Chart

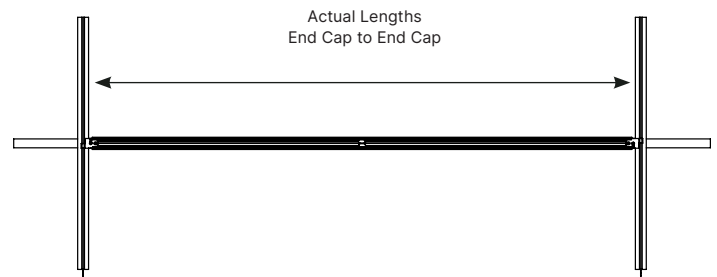
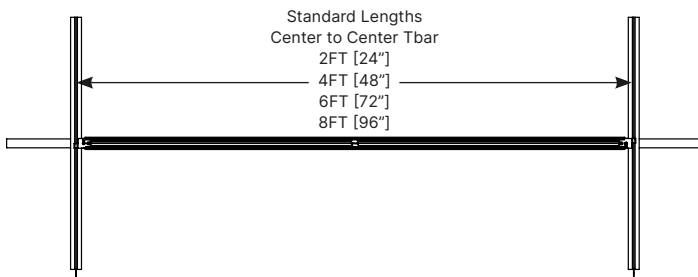
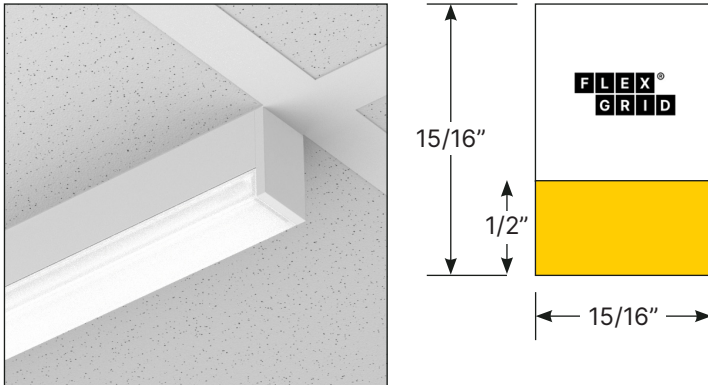
| CODE | CCT SELECTED |       |       |       |       |       |       |       |
|------|--------------|-------|-------|-------|-------|-------|-------|-------|
|      | 2200K        | 2700K | 3000K | 3500K | 4000K | 5000K | 5700K | 6500K |
| 80   | -            | 0.91  | 0.96  | 1.00  | 1.04  | 1.11  | 1.11  | 1.11  |
| 90   | -            | 0.91  | 0.96  | 1.00  | 1.04  | 1.11  | 1.11  | 1.11  |
| 95   | -            | 0.91  | 0.96  | 1.00  | 1.04  | 1.11  | 1.03  | 1.04  |

### LPW Performance | 48" Length, 80+/3500K CRI/CCT

|      | DIRECT |       |       |        |        |      |      |
|------|--------|-------|-------|--------|--------|------|------|
|      | DLAM   | DBW60 | DDA70 | DA5025 | DA4005 | DM55 | DN40 |
| LM/W | 111    | 123   | 123   | 130    | 128    | 129  | 116  |

## Dimensions & Installation

### Square Drop Lens 1/2"

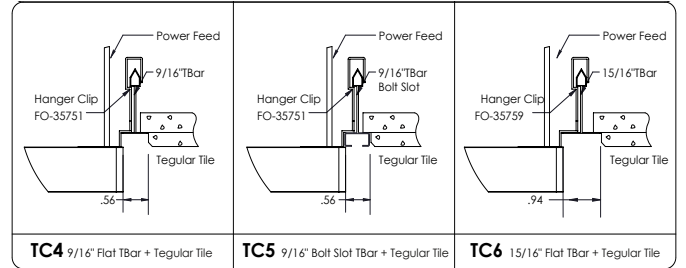
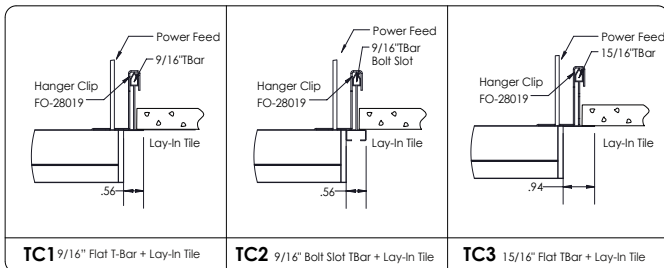


| LENGTH   | TC1 & TC2 / TC4 & TC5 |               |
|----------|-----------------------|---------------|
|          | STANDARD LENGTHS      | ACTUAL LENGTH |
| L2 - 2FT | 24"                   | 23.4"         |
| L4 - 4FT | 48"                   | 47.4"         |
| L6 - 6FT | 72"                   | 71.4"         |
| L8 - 8FT | 96"                   | 95.4"         |

| LENGTH   | TC3 / TC6        |               |
|----------|------------------|---------------|
|          | STANDARD LENGTHS | ACTUAL LENGTH |
| L2 - 2FT | 24"              | 23.05"        |
| L4 - 4FT | 48"              | 47.05"        |
| L6 - 6FT | 72"              | 71.05"        |
| L8 - 8FT | 96"              | 95.05"        |

### Grid Mounting Options

Replaces TBar crossmember in ceiling grid system. Available with a range of accessories, mounts and inserts that provide easy customization of visual appearance and performance enhancements.



## Technical Data

### Finishes & Design Options

#### Housing Colors (Matte Finish)

- White (RAL9003)
- Black (RAL9005)
- Gray (RAL7001)
- Custom RAL

#### Housing Material

6063-T5 extruded, recycled aluminum

#### Mounting Brackets and Hardware

Sheet Metal

#### Flat End Cap Material

Machined or cast aluminum

#### Lens Options and Material

Square Drop Lens 1/2" with Patented SmartOptics® made from Acrylic (PMMA).

### Standards & Certifications

#### Sustainability

Low carbon, environmentally conscious packaging and shipping methods

#### Compliance

BABAA & TAA compliant in-house manufacturing in Woburn, MA with North American supply chain



#### Certifications



#### Declare Listed and Red List Free

Low carbon, environmentally conscious packaging and shipping methods

#### Recyclable

SmartOptics and all powder coated and anodized parts are fully recyclable at end of life

#### Manufacturing

All FlexGrid products and associated optics and LED engines are assembled at our factory in Woburn, MA

#### Quality Assurance

Each product is engineered reliability and quality assurance tested

### Declare.

Nano Series  
XICO Lighting  
Final Assembly: Woburn, MA, USA  
Life Expectancy: 10+ Years  
End of Life Options: Recyclable (99%)

**Ingredients:**  
Aluminum, Glass, acids, chemicals, Poly(methyl methacrylate), Phenol, 4,4'-[1-methylethylene]bis-, polymer with 2,2'-(2,6-dimethyl-1,4-benzodioxane)bis(4-chlorobenzenesulfonyl)chloride, 1,3-benzenedicarboxylic acid, 1,1-dimethyl ethyl polymer with 1,4-dimethyl 1,4-benzenedicarboxylic acid, 1,2-dichloroethane, Polyethylene, Copper, Polyethylene Terephthalate, Barium sulfate, Magnesium, Silicon, Phosphoric acid, phosphoric acid, dibutyl ester from Silicones and Silicones, 8-Mu, Chromium, metallic gold, Manganese, Titanium, Zinc, Nickel, chemicals

### Declare Listed

At FlexGrid Lighting, we are committed to transparency and sustainability. That's why all our products are Declare listed, providing clear insights into their environmental footprint and safety. Look for these internationally recognized labels on FlexGrid products, packaging, or at [FlexGridled.com/declare](https://flexgridled.com/declare).



### Red List Free

FlexGrid Lighting is dedicated to creating safe, sustainable solutions. All our products are Red List Free, meeting the highest industry standards for healthy and environmentally responsible materials as defined by the International Living Future Institute (ILFI). Learn more at [FlexGridled.com/declare](https://flexgridled.com/declare).

### Quick Links

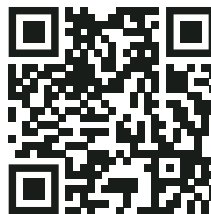
Product Page



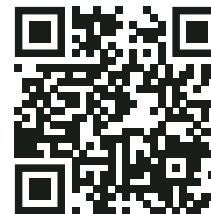
SmartBeam



5-YR Warranty



Business Terms



Patents & Trademarks

